

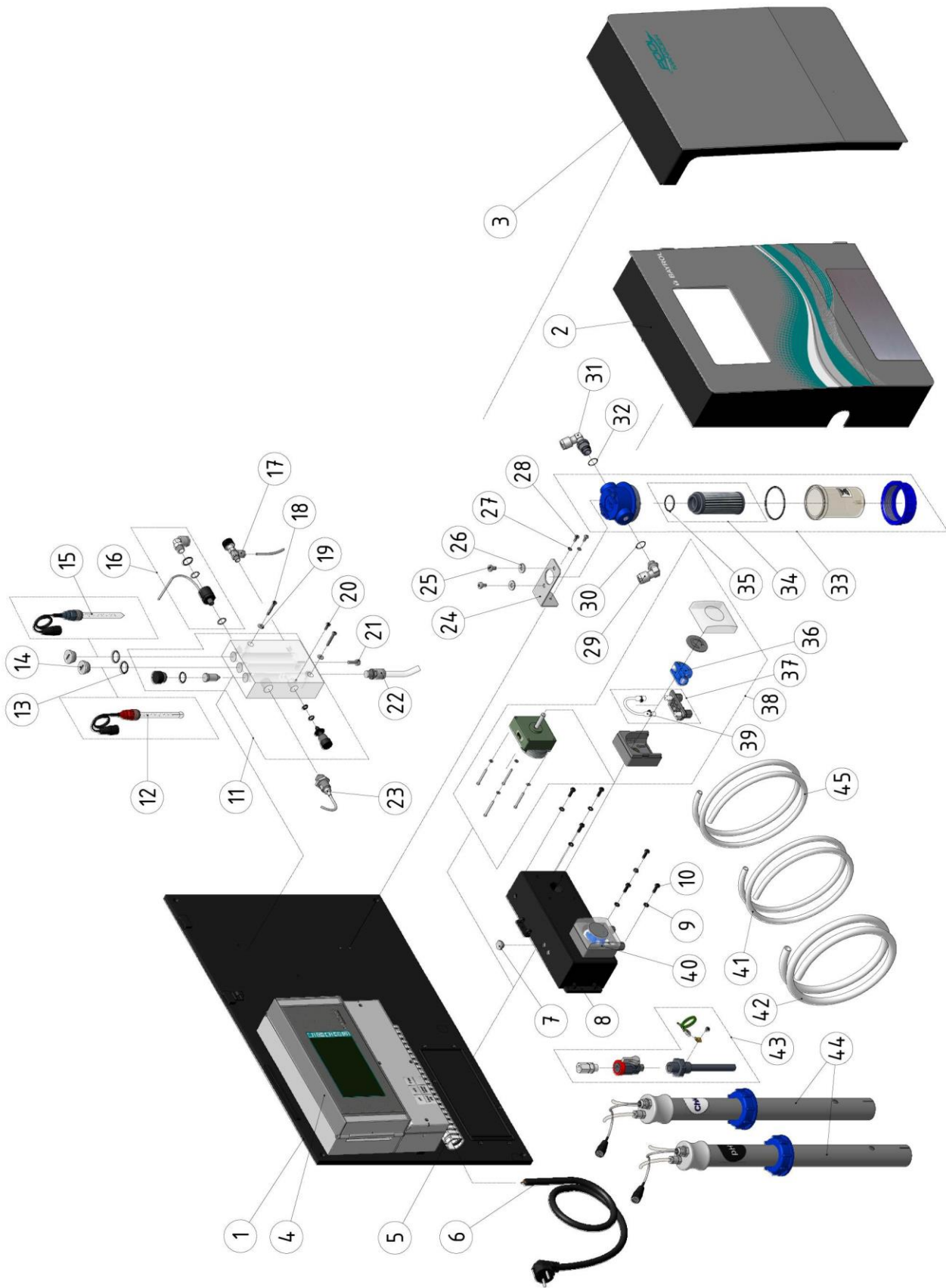
Exploding drawing

for the Measuring, Control, and Dosing System for Swimming Pools



PoolManager® Chlorine
PoolManager® Bromine
PoolManager® Oxygen
PoolManager® PRO

PoolManager® Chlorine - 177100 / 177110 / 177111

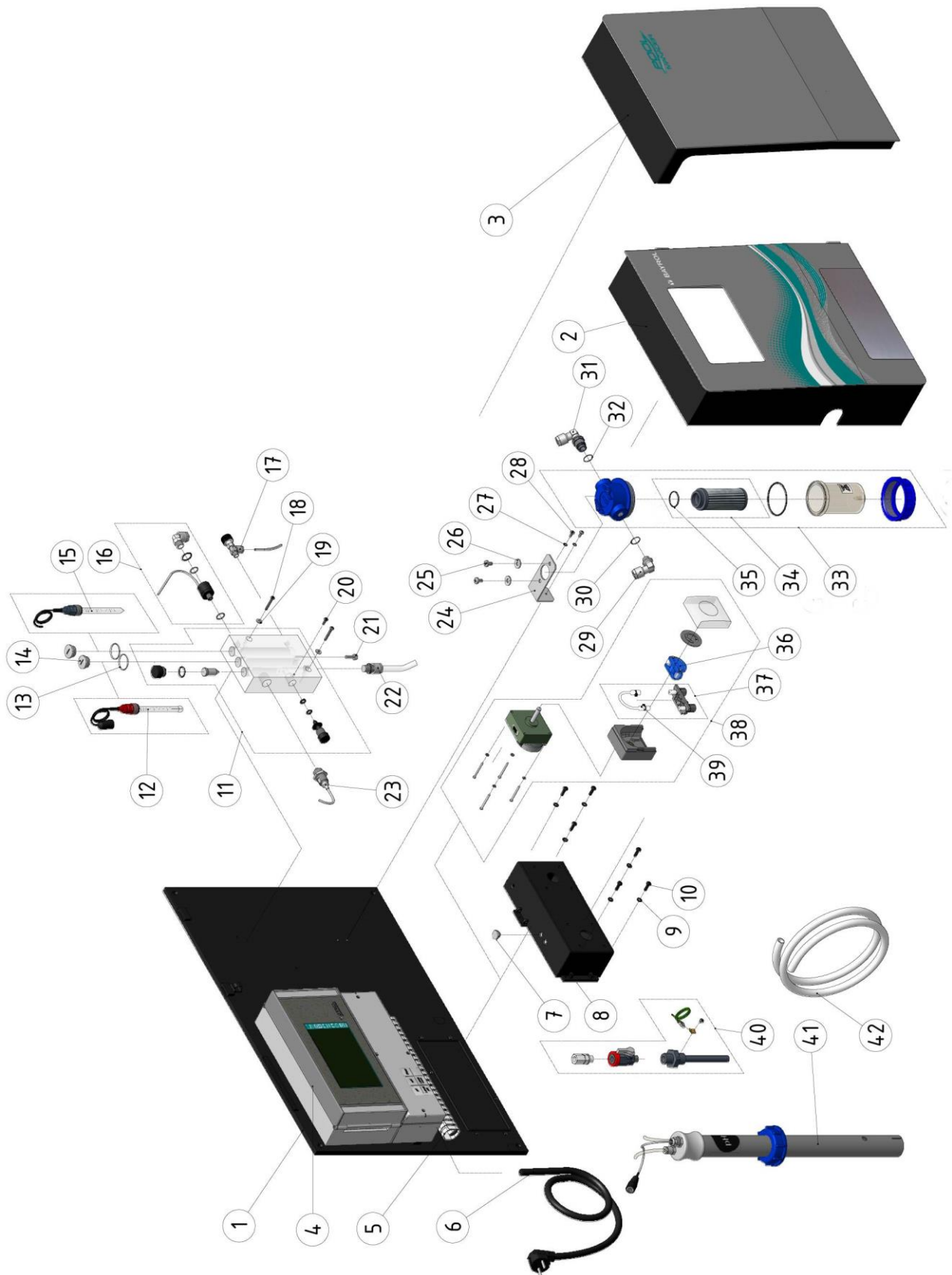


Descriptions und Item number see next page.

PoolManager® Chlorine - 177100 / 177110 / 177111

Number	BAYROL Item no.	Description
1	127000	BASE PLATE PM5
2	127017	COVER HOOD LEFT PM5 ND
3	127018	COVER HOOD RIGHT PM5 ND
4	127270	CONTROLLER PM5 ND
5	127007	DUCT FOR WIRING PM5
6	100614	POWER CABLE 2M
7	127003	BLANK PLUG PUMP CASE
8	127002	PUMP CASE, 2 PUMPS
9	100304	GROMMET 4,3/M5 GALV.
10	100104	LENS HEAD SCREW M5X12 GALV.
11	126063	FLOW CELL PM 4
12	185301	PH SENSOR
13	100712	O-RING 18 X 2,5 VITON
14	100600	CAP PG13,5
15	185300	REDOX SENSOR
16	176926	TEMPERATURE PROBE ANGLE LONG
17	185413	ELBOW SHUT OFF VALVE
18	100102	LENS HEAD SCREW M4X30 GALV.
19	100303	GROMMET 4,3/M4 GALV.
20	100100	LENS HEAD SCREW M4X12 GALV.
21	100110	LENS HEAD SCREW M5X20 VA
22	112279	SCREWING D10 R1/4" M. NUT
23	126056	PROXIMITY SWITCH
24	186023	BRACKET FOR PREFILTER
25	100106	LENS HEAD SCREW M6X10 GALV.
26	100305	GROMMET 6,4 M6
27	100303	GROMMET 4,3/M4 GALV.
28	100100	LENS HEAD SCREW M4X12 GALV.
29	112278	MOUNTING BRACKET D10 R/1/4
30	124105	O-RING 12,0 x 3,0 VITON
31	112278	MOUNTING BRACKET D10 R/1/4
32	124105	O-RING 12,0 x 3,0 VITON
33	123038	STRAINER F20 - ¼" STEEL INSERT RIBBED
34	123036	STEEL INSERT RIBBED FOR STRAINER F20
35	100722	O-RING FOR STEEL INSERT RIBBED F20
36	127304	PUMP ROTOR
37	127356	HOSE SET 3,0 L GREY
38	127360	PUMP 3,0 L WITHOUT HOUSING GREY
39	127353	HOSE 3,0 L INCL. BAND CLAMP
40	127360	PUMP 3,0 L WITHOUT HOUSING GREY
41	100509	PE-HOSE 6 x 4 x 1
42	186054	PE-HOSE 10 x 8 x 1
43	173941	VALVE FOR SAMPLING LINE PVDF & EARTHING
44	171221	SUCTION LANCE UNI PM5
45	100512	PTFE-HOSE 6x4x1

PoolManager® Bromine - 177200

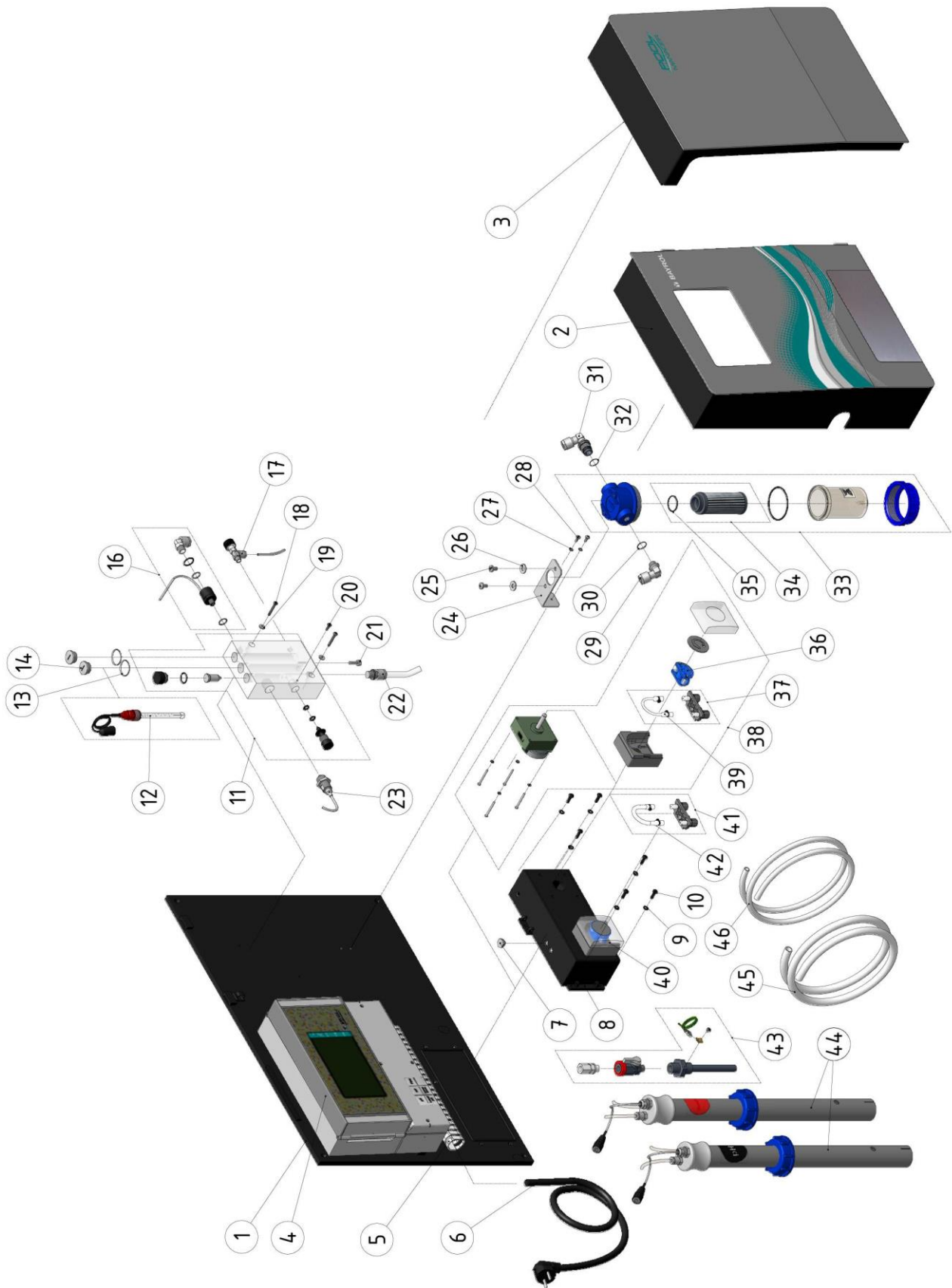


Descriptions und Item number see next page.

PoolManager® Bromine - 177200

Number	BAYROL Item no.	Description
1	127000	BASE PLATE PM5
2	127017	COVER HOOD LEFT PM5 ND
3	127018	COVER HOOD RIGHT PM5 ND
4	127270	CONTROLLER PM5 ND
5	127007	DUCT FOR WIRING PM5
6	100614	POWER CABLE 2M
7	127003	BLANK PLUG PUMP CASE
8	127001	PUMP CASE, 1 PUMP
9	100304	GROMMET 4,3/M5 GALV.
10	100104	LENS HEAD SCREW M5X12 GALV.
11	126063	FLOW CELL PM 4
12	185301	PH SENSOR
13	100712	O-RING 18 X 2,5 VITON
14	100600	CAP PG13,5
15	185300	O-RING 18 X 2,5 VITON
16	176926	TEMPERATURE PROBE ANGLE LONG
17	185413	ELBOW SHUT OFF VALVE
18	100102	LENS HEAD SCREW M4X30 GALV.
19	100303	GROMMET 4,3/M4 GALV.
20	100100	LENS HEAD SCREW M4X12 GALV.
21	100110	LENS HEAD SCREW M5X20 VA
22	112279	SCREWING D10 R1/4" M. NUT
23	126056	PROXIMITY SWITCH
24	186023	BRACKET FOR PREFILTER
25	100106	LENS HEAD SCREW M6X10 GALV.
26	100305	GROMMET 6,4 M6
27	100303	GROMMET 4,3/M4 GALV.
28	100100	LENS HEAD SCREW M4X12 GALV.
29	112278	MOUNTING BRACKET D10 R/1/4
30	124105	O-RING 12,0 x 3,0 VITON
31	112278	MOUNTING BRACKET D10 R/1/4
32	124105	O-RING 12,0 x 3,0 VITON
33	123038	STRAINER F20 - ¼" STEEL INSERT RIBBED
34	123036	STEEL INSERT RIBBED FOR STRAINER F20
35	100722	O-RING FOR STEEL INSERT RIBBED F20
36	127304	PUMP ROTOR
37	127313	HOSE SET 1,5 L GREY
38	127320	PUMP 1,5 L WITHOUT HOUSING GREY
39	127303	HOSE 1,5 L INCL. BAND CLAMP
40	173941	VALVE FOR SAMPLING LINE PVDF & EARTHING
41	171221	SUCTION LANCE UNI PM5
42	100516	PE-HOSE 14 x 11 x 1,5

PoolManager® Oxygen - 177300

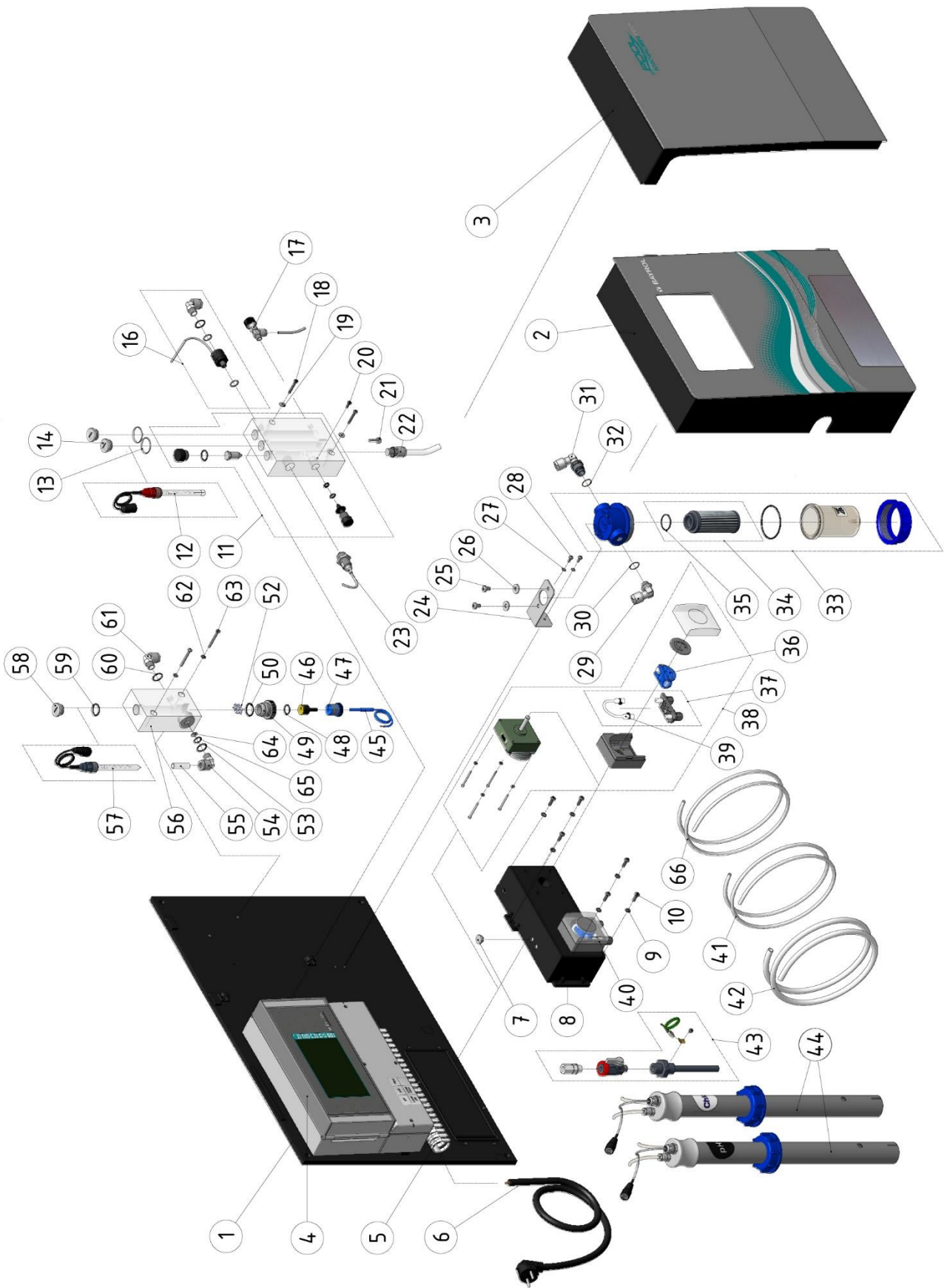


Descriptions und Item number see next page.

PoolManager® Oxygen - 177300

Number	BAYROL Item no.	Description
1	127000	BASE PLATE PM5
2	127017	COVER HOOD LEFT PM5 ND
3	127018	COVER HOOD RIGHT PM5 ND
4	127270	CONTROLLER PM5 ND
5	127007	DUCT FOR WIRING PM5
6	100614	POWER CABLE 2M
7	127003	BLANK PLUG PUMP CASE
8	127002	PUMP CASE, 2 PUMPS
9	100304	GROMMET 4,3/M5 GALV.
10	100104	LENS HEAD SCREW M5X12 GALV.
11	126063	FLOW CELL PM 4
12	185301	PH SENSOR
13	100712	O-RING 18 X 2,5 VITON
14	100600	CAP PG13,5
16	176926	TEMPERATURE PROBE ANGLE LONG
17	185413	ELBOW SHUT OFF VALVE
18	100102	LENS HEAD SCREW M4X30 GALV.
19	100303	GROMMET 4,3/M4 GALV.
20	100100	LENS HEAD SCREW M4X12 GALV.
21	100110	LENS HEAD SCREW M5X20 VA
22	112279	SCREWING D10 R1/4" M. NUT
23	126056	PROXIMITY SWITCH
24	186023	BRACKET FOR PREFILTER
25	100106	LENS HEAD SCREW M6X10 GALV.
26	100305	GROMMET 6,4 M6
27	100303	GROMMET 4,3/M4 GALV.
28	100100	LENS HEAD SCREW M4X12 GALV.
29	112278	MOUNTING BRACKET D10 R/1/4
30	124105	O-RING 12,0 x 3,0 VITON
31	112278	MOUNTING BRACKET D10 R/1/4
32	124105	O-RING 12,0 x 3,0 VITON
33	123038	STRAINER F20 - ¼" STEEL INSERT RIBBED
34	123036	STEEL INSERT RIBBED FOR STRAINER F20
35	100722	O-RING FOR STEEL INSERT RIBBED F20
36	127304	PUMP ROTOR
37	127313	HOSE SET 1,5 L GREY
38	127320	PUMP 1,5 L WITHOUT HOUSING GREY
39	127303	HOSE 1,5 L INCL. BAND CLAMP
40	127360	PUMP 3,0 L WITHOUT HOUSING GREY
41	127356	HOSE SET 3,0 L GREY
42	127353	HOSE 3,0 L INCL. BAND CLAMP
43	173941	VALVE FOR SAMPLING LINE PVDF & EARTHING
44	171221	SUCTION LANCE UNI PM5
45	186054	PE-HOSE 10 x 8 x 1
46	100509	PE-HOSE 6 x 4 x 1

PoolManager® PRO - 177610 / 177630 / 177631



Descriptions und Item number see next page.

PoolManager® PRO - 177610 / 177630 / 177631

Number	BAYROL Item-No.	Description
1	127000	BASE PLATE PM5
2	127017	COVER HOOD LEFT PM5 ND
3	127020	COVER HOOD RIGHT PM5 PRO ND
4	127270	CONTROLLER PM5 ND
5	127007	DUCT FOR WIRING PM5
6	100614	POWER CABLE 2M
7	127003	BLANK PLUG PUMP CASE
8	127002	PUMP CASE, 2 PUMPS
9	100304	GROMMET 4,3/M5 GALV.
10	100104	LENS HEAD SCREW M5X12 GALV.
11	126063	FLOW CELL PM 4
12	185301	PH SENSOR
13	100712	O-RING 18 X 2,5 VITON
14	100600	CAP PG13,5
15	185300	REDOX SENSOR
16	176926	TEMPERATURE PROBE ANGLE LONG
17	185413	ELBOW SHUT OFF VALVE
18	100102	LENS HEAD SCREW M4X30 GALV.
19	100303	GROMMET 4,3/M4 GALV.
20	100100	LENS HEAD SCREW M4X12 GALV.
21	100110	LENS HEAD SCREW M5X20 VA
22	112279	SCREWING D10 R1/4" M. NUT
23	126056	PROXIMITY SWITCH
24	186023	BRACKET FOR PREFILTER
25	100106	LENS HEAD SCREW M6X10 GALV.
26	100305	GROMMET 6,4 M6
27	100303	GROMMET 4,3/M4 GALV.
28	100100	LENS HEAD SCREW M4X12 GALV.
29	112278	MOUNTING BRACKET D10 R/1/4
30	124105	O-RING 12,0 x 3,0 VITON
31	112278	MOUNTING BRACKET D10 R/1/4
32	124105	O-RING 12,0 x 3,0 VITON
33	123038	STRAINER F20 - ¼" STEEL INSERT RIBBED
34	123036	STEEL INSERT RIBBED FOR STRAINER F20
35	100722	O-RING FOR STEEL INSERT RIBBED F20
36	127304	PUMP ROTOR
37	127356	HOSE SET 3,0 L GREY
38	127360	PUMP 3,0 L WITHOUT HOUSING GREY
39	127353	HOSE 3,0 L INCL. BAND CLAMP
40	127360	PUMP 3,0 L WITHOUT HOUSING GREY
41	100509	PE-HOSE 6 x 4 x 1
42	186054	PE-HOSE 10 x 8 x 1
43	173939	VALVE FOR SAMPLING LINE EARTHING
44	171221	SUCTION LANCE UNI PM5

45	127104	CABLE FOR GOLD-CIRCLE
46	127101	GOLD-CIRCLE
47	127106	CLAMP SCREW FOR GOLD-CIRCLE
48	127015	GASKET GOLD-CIRCLE
49	127102	FITTING FOR GOLD-CIRCLE
50	127107	O-RING FITTING GOLD-CIRCLE
51	--	--
52	127103	GLASS BALLS FOR GOLD-CIRCLE
53	124105	O-RING 12,0 x 3,0 VITON
54	112278	MOUNTING BRACKET D10 R/1/4
55	186054	PE-HOSE 10 x 8 x 1
56	127100	CHLORINE MEASURING CELL PM5
57	185300	REDOX SENSOR
58	100600	CAP PG13,5
59	100712	O-RING 18 X 2,5 VITON
60	124105	O-RING 12,0 x 3,0 VITON
61	112278	MOUNTING BRACKET D10 R/1/4
62	100303	GROMMET 4,3/M4 GALV.
63	100102	LENS HEAD SCREW M4X30 GALV.
64	127108	STRAINER INPUT CHLORINE MEASURING CELL
65	127109	O-RING INPUT CHLORINE MEASURING CELL